

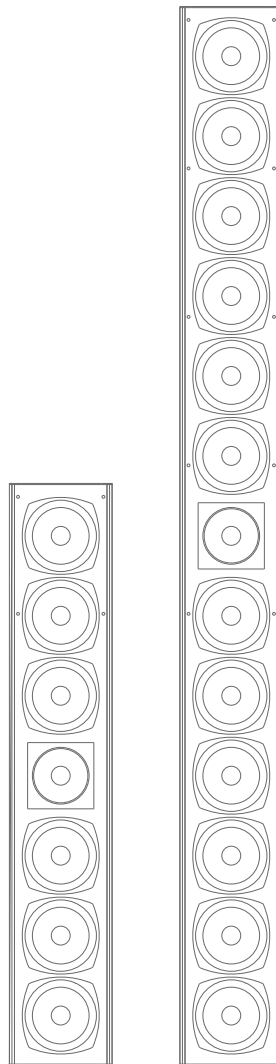
MOOSE

www.mooseaudio.com

PROUDLY DEVELOPED AND
MANUFACTURED IN PORTUGAL

C605DP / C1205DP

Active column PA speaker
Integrated DSP



USER'S MANUAL

Introduction

Dear customer,

Thank you for choosing MOOSE branded products!

MOOSE is a brand of professional audio & lighting products, proudly developed and manufactured in PORTUGAL.

In order to operate this product in a safe and reliable manner, please follow the instructions in this booklet and before operating the equipment read the instructions carefully and please note the technical information.

Our products undergo very rigorous testing under strict conditions and they are monitored continuously during the manufacturing process. In order to guarantee the product function and safety, the original parts of the manufacturer's design must be used. If any parts other than those of the manufacturer are used, or the product is modified in any way, the user forfeits all warranty rights to claim.

Caution

1. Before connecting the equipment to the power outlet, first verify that the mains voltage and frequency match the values specified on the equipment.
2. If the power cord of the device is equipped with an earthing contact, then it must be connected to an outlet with a protective ground. Never deactivate the protective ground of a power cord.
3. Unplug the power cord and power adapter from the power outlet if there is a risk of a lightning strike or before extended periods of disuse.
4. Replace fuses only with fuses of the same type and rating. If a fuse blows repeatedly, please contact an authorised service company.
5. Do not open or modify this equipment.
6. After connecting the equipment, check all cables in order to prevent damage or accidents, e.g., due to tripping hazards.
7. Do not turn on the Amplifier ON before checking that all volumes to zero .

IMPORTANT: Never remove the cover, because otherwise there may be a risk of electric shock. There are no user serviceable parts inside. Have repairs carried out only by qualified service personnel.



The lightning flash with arrowhead symbol within an equilateral triangle is intended to alert the user to the presence of uninsulated "dangerous voltage" within the product's enclosure that may be of sufficient magnitude to constitute a risk of electrical shock.



The exclamation mark within an equilateral triangle is intended to alert the user to the presence of important operating and maintenance instructions.



To prevent electrical shock do not remove the cover. No user serviceable parts inside. Refer service to qualified personnel only.

The amplifier is marked with this instruction so please proceed accordingly in order to avoid any hazard.

Manufacturers Declaration

PROPER DISPOSAL OF THIS PRODUCT

(Valid in the European Union and other European countries with waste separation)



This symbol on the product, or the documents accompanying the product, indicates that this appliance may not be treated as household waste. This is to avoid environmental damage or personal injury due to uncontrolled waste disposal. Please dispose of this product separately from other waste and have it recycled to promote sustainable economic activity.

Household users should contact either the retailer where they purchased this product, or their local government office, for details on where and how they can recycle this item in an environmentally friendly manner.

Business users should contact their supplier and check the terms and conditions of the purchase contract. This product should not be mixed with other commercial wastes for disposal .

ENVIRONMENTAL PROTECTION AND ENERGY CONSERVATION

Energy conservation is an active contribution to environmental protection. Please turn off all unneeded electrical devices. To prevent unneeded devices from consuming power in standby mode, disconnect the mains plug.

EC DECLARATION OF CONFORMITY

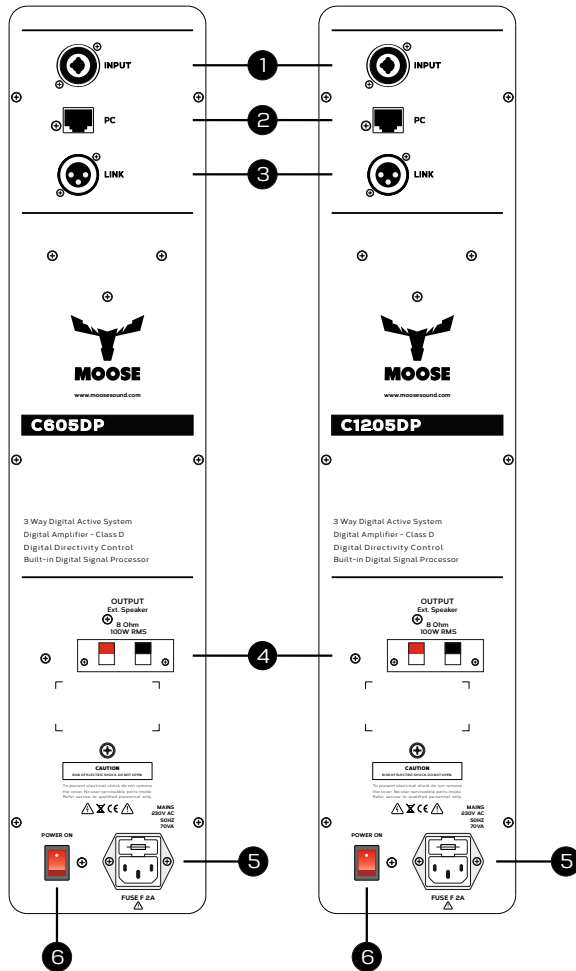
The equipment marketed by MOOSE complies (where applicable) with the essential requirements and other relevant specifications of Directives 1999/5/EC (R&TTE), 2004/108/EC (EMC) und 2006/95/EC (LVD). Additional information can be requested to info@profactor.pt.



PROUDLY DEVELOPED AND MANUFACTURED IN PORTUGAL

Connections and Controls

Please refer to the following scheme and instructions:



- 1. INPUT:** Balanced XLR/JACK signal input (hybrid Combo connector) for connection of an external audio source (e.g., mixer).
- 2. PC:** Ethernet cable (RJ45) input to allow/establish communication between the built-in DSP and the software supplied.
- 3. LINK:** Balanced signal output (XLR 3p) for connection of another C605DP or C1205DP active column speaker.
- 4. OUTPUT:** Speaker output (spring terminals) for connection of another passive C605DP or C1205DP, 100W and Min. load: 80hm. There is an "extra" amplifier inside capable of driving another passive version of the C605DP or C1205DP speaker.
- 5. MAINS IN:** IEC socket, AC 230V - 50~60Hz.
- 6. POWER ON:** Illuminated on/off switch. Before switching the system on or off, always adjust the volume to zero.

Content: the package includes a RJ45 ethernet cable, a small interface PCB and a mini CD with installation software.

Cabling connections

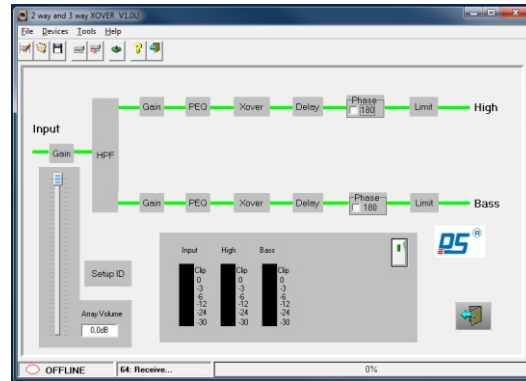
The below procedures are mandatory before start using the software.

- 1.** Pick up the small PCB with RJ45 to RS232 included in the package.
- 2.** Connect the ethernet cable between the RJ45 - PC input (2) on the rear panel of the speaker and the small PCB RJ45 input.
- 3.** Pick up the RS232 to USB cable adapter and connect the RS232 connector to the Rs232 output connector on the small PCB.
- 4.** Connect the USB connector to your computer that will control the speaker.
- 5.** Turn ON the power amplifier by applying the ON/OFF power switch.

Software instructions

All parameters related to the built-in DSP can be controlled and adjusted by the software supplied in the package. First take the mini CD and install correctly the software following the instructions.

Please make sure that you will use WINDOWS XP or any previous version of Windows. Install the software using the mini CD supplied and after installing it, just open the software and the window will be shown as follows:



1. Set the connection

1. If the cable is correctly connected, go to menu TOOLS - COM Setup, and choose the COM port by clicking OK. Usually the correct port number is the one with highest number between the ones shown as being available.
2. Then go to menu TOOLS - CONNECT and on the opened window just press Connect to establish communication.
3. If everything is according to the instructions given, communication will be set and on the left bottom corner there will be an indication of ONLINE with a filled oval shape meaning that the connection is established.

2. Backup the program parameters setup from factory:

The built-in DSP has 16 internal memories that can be used with different setups.

In order to ensure that you preserve the factory preset it is important that you firstly download and save the program that is saved in the built-in DSP. To do this:

1. Go to menu FILE - MEMORY and on the open window select the PROGRAM n. 1 (Preset)
2. After selecting PROGRAM n.1, press SAVE and select the folder on your computer where the factory setup program will be saved.
3. Give a name for the factory setup program and press SAVE.

3. Download factory preset parameters to software:

The next step is to download the factory parameters to the software so that you can adjust them according to the environment that speakers are installed at. To do this:

1. Go to menu FILE - MEMORY and on the open window select the PROGRAM n. 1 (Preset)
2. After selecting PROGRAM n.1, press UPLOAD and the program will be uploaded to the software.

The program is now available for any kind of adjustment for all available parameters.

Software instructions

4. Save a new program

After making all adjustments, you must save the new program to the PC and then upload and save it on the DSP memory. To do this:

1. Go to menu FILE - MEMORY and the press SAVE
2. Select the folder and the name of the program and SAVE.
3. Then go back to MEMORY and select the program number to which you want to save
4. After selecting the PROGRAM number then press SETUP DOWN and the new setup will be saved on the DSP internal memory.

5. Upload an existing program to DSP memory

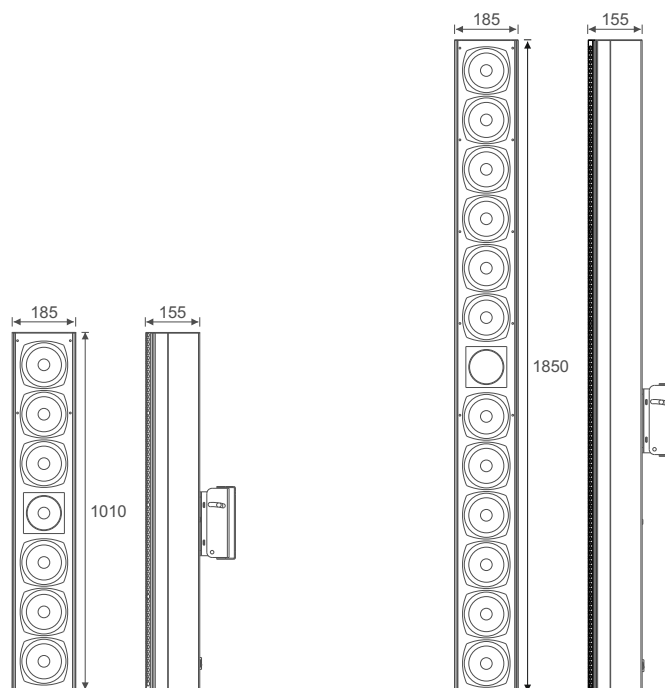
If you have a program saved in your computer and you want to add it to the DSP memory, do the following::

1. Go to menu FILE - MEMORY and on the open window select the program number to which you want to upload
2. After selecting PROGRAM number, press FILE DOWN and select the program you want to upload
3. Then press OPEN and the file will be uploaded to the DSP

Technical specifications

| MODEL | C605DP | C1205DP |
|-------------------------------|------------------------------------------------------|-------------------|
| TYPE | Full range active column speaker | |
| ENCLOSURE DESIGN | Trapezoidal | |
| POWER OUTPUT (RMS) | 150W + 50W + 100W | |
| FREQUENCY RANGE | 90Hz - 18kHz | |
| NOMINAL IMPEDANCE | 4 Ohm | |
| TRANSDUCER TYPE | 6x 5" MF + 1" HF | 12x 5" MF + 1" HF |
| DISPERSION | 120° horizontal (average) | |
| CROSSOVER FREQUENCY | Built-in DSP | |
| MAX. S.P.L. (PEAK) | 86dB @ 1m | 90dB @ 1m |
| CONSTRUCTION | AL construction | |
| GRILLE | Custom perforated metal grille | |
| INSTALLATION, RIGGING, FLYING | C-sup L for wall mountingng | |
| DIMENSIONS (WxDxH) | 185x155x1010mm | 185x155x1850mm |
| WEIGHT | 13.5Kg | 22.5Kg |
| AMPLIFICATION | Class D (digital) | |
| POWER RATING (W) RMS | 150W + 50W + 100W (AUX out) | |
| INPUT SENSITIVITY | -2 dBu / +4 dBu | |
| CONTROLS | By internal DSP | |
| CONNECTORS | XLR/JACK COMBO in, XLR 3p link, Spring terminals out | |
| PROTECTION | Short circuit, limiter | |

Unit: mm (milimeters)



PROFACTOR S.A., all rights reserved. The technical data and the functional product characteristics can be subject to modifications. The photocopying, the translation, and all other forms of copying of fragments or of the integrity of this user's manual is prohibited.

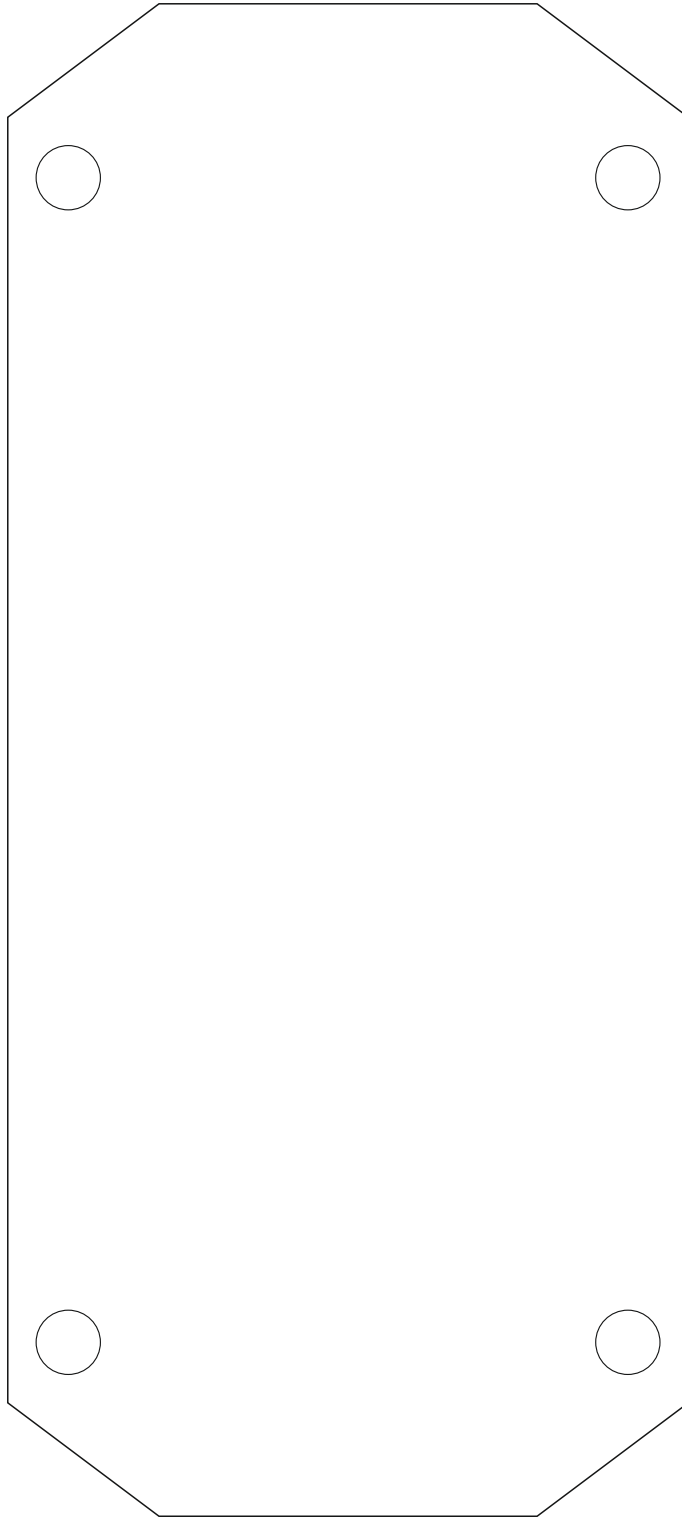


FIGURE 1
SCALE 1:1

PROUDLY DEVELOPED AND
MANUFACTURED IN PORTUGAL

MOOSE is a brand of PROFACTOR S.A.

PROFACTOR S.A

Rua do Padrão 52
4440-617 Valongo
PORTUGAL
Telf.: +351 224 119 160
Fax: +351 224 155 822
info@profactor.pt

MOOSE



www.moose-sound.com